



Features

- 25+ artisan finishes including 12 PVD finishes
- All brass construction
- Insulated to reduce heat to faucet
- Self-Closing for hot water
- Max flow rate: 1.0 gpm (3.8 L/min)
- **Not** compatible with RO filter units
- Requires Hot Water Tank (9628SS) sold separately

Codes/Standards Applicable

Product meets or exceeds the following:

- ASME A112.18.1/CSA B125.1
- NSF 61, NSF 372, CEC, & DOE
- Commonwealth of MA
- ADA compliant



(9623-K51-ST shown)

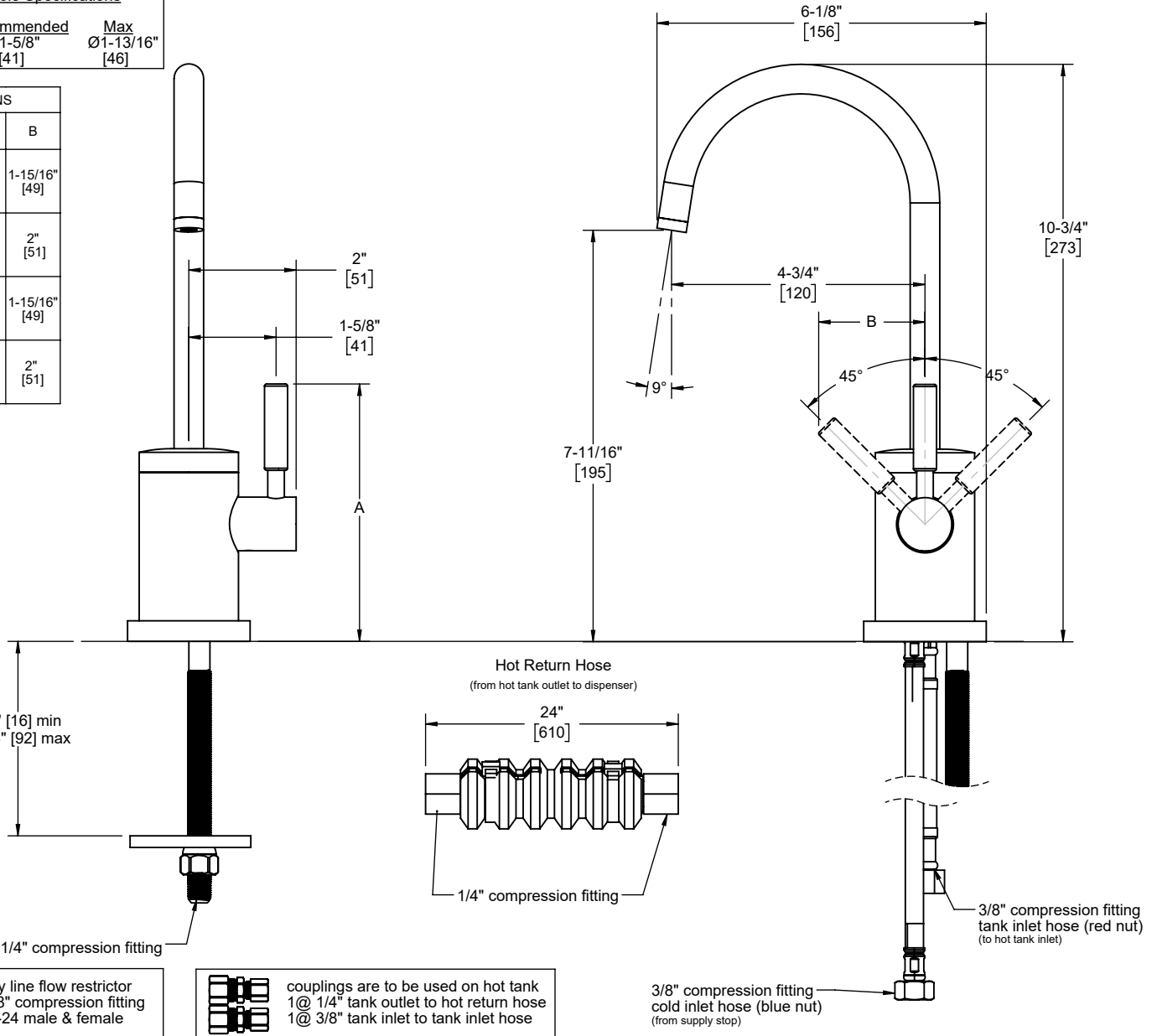
9623-K51-XX



XX = Denotes handle shown

Through-Hole Specifications		
Min	Recommended	Max
Ø1-9/16" [40]	Ø1-5/8" [41]	Ø1-13/16" [46]

DIMENSIONS		
XX HANDLE	A	B
FB	4-13/16" [122]	1-15/16" [49]
ST	4-3/4" [121]	2" [51]
BFB	4-13/16" [122]	1-15/16" [49]
BST	4-3/4" [121]	2" [51]



supply line flow restrictor for 3/8" compression fitting 9/16"-24 male & female

couplings are to be used on hot tank 1 @ 1/4" tank outlet to hot return hose 1 @ 3/8" tank inlet to tank inlet hose

Dimensions are inches, rounded to 1/16"
[Dimensions in brackets are mm, rounded to 1mm]