

# ELKAY® SPECIFICATIONS

## Service Sink, Wall Mounted Model ESS, ESSB and ESSW Series

### GENERAL

#14 gauge, type 304 (18-8) stainless steel service sink with 1-3/4" (44mm) radius vertical and horizontal coved corners, 1-1/2" (38mm) rolled rims. Full length 12" (305mm) high back-splash. Exposed surfaces are hand blended to a uniform lustrous satin finish. Furnished with wall hanger and stainless steel support brackets.

(CHECK MODEL SPECIFIED)

- |                                   |                                    |                                    |
|-----------------------------------|------------------------------------|------------------------------------|
| <input type="checkbox"/> ESS2118C | <input type="checkbox"/> ESSB2118C | <input type="checkbox"/> ESSW2118C |
| <input type="checkbox"/> ESS2319C | <input type="checkbox"/> ESSB2319C | <input type="checkbox"/> ESSW2319C |
| <input type="checkbox"/> ESS2520C | <input type="checkbox"/> ESSB2520C | <input type="checkbox"/> ESSW2520C |

### FURNISHED COMPLETE WITH "ESS" SERIES:

SUPPLY: **LK69C.** (Pair) Chrome plated single bib service faucets. Pair includes (1) hose thread outlet and (1) plain outlet.

DRAIN: **LK173.** Cast iron, "P" trap standard.

### FURNISHED COMPLETE WITH "ESSB" SERIES:

SUPPLY: **LK907BR03L2H.** 3" (76mm) Bucket Hook Faucet, rough chrome finish, 1/2" (13mm) NPT female inlets.

DRAIN: **LK173.** Cast iron, "P" trap standard.

### FURNISHED COMPLETE WITH "ESSW" SERIES:

SUPPLY: **LK940C.** 7" (178mm) Bucket Hook Faucet, rough chrome finish, 1/2" (13mm) NPT female inlets.

DRAIN: **LK173.** Cast iron, "P" trap standard.

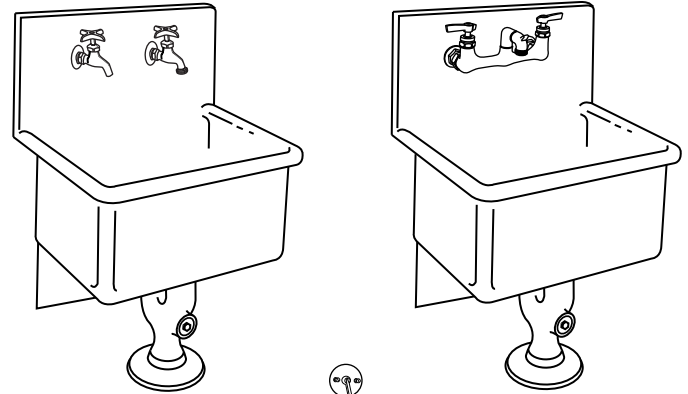
### FOLLOWING MODELS DO NOT INCLUDE FAUCET & TRAP STANDARD: (Specify faucet drillings and location desired)

- |                                  |                                  |                                  |
|----------------------------------|----------------------------------|----------------------------------|
| <input type="checkbox"/> ESS2118 | <input type="checkbox"/> ESS2319 | <input type="checkbox"/> ESS2520 |
|----------------------------------|----------------------------------|----------------------------------|

### DIMENSIONS

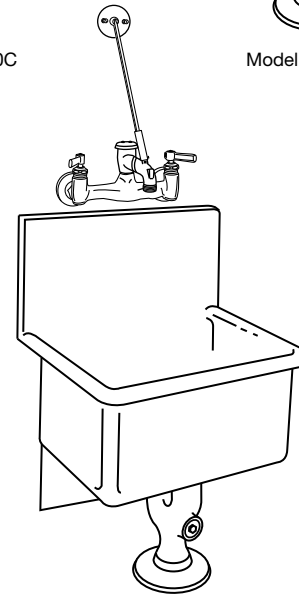
Model Number	A		B		C		D		E		F	
	in.	mm	in.	mm	in.	mm	in.	mm	in.	mm	in.	mm
*2118	21	533	17½	445	18	457	14	356	10½	267	9	229
*2319	23	584	18½	470	20	508	15	381	11½	292	9½	241
*2520	25	635	19½	495	22	559	16	406	12½	318	10	254

\*Above dimensions refer to ESS, ESSB and ESSW Series.

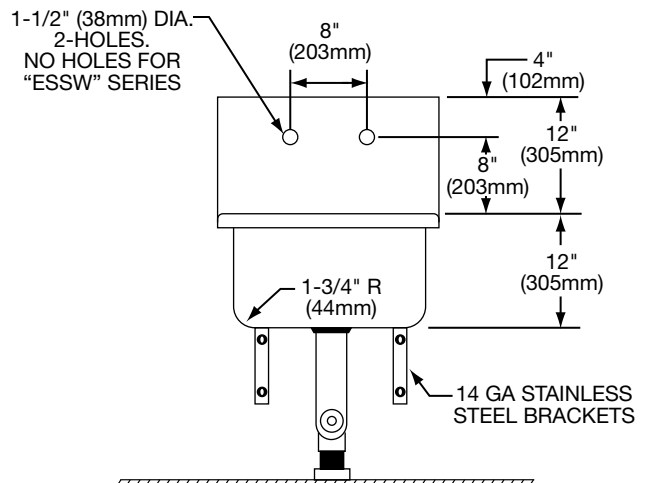
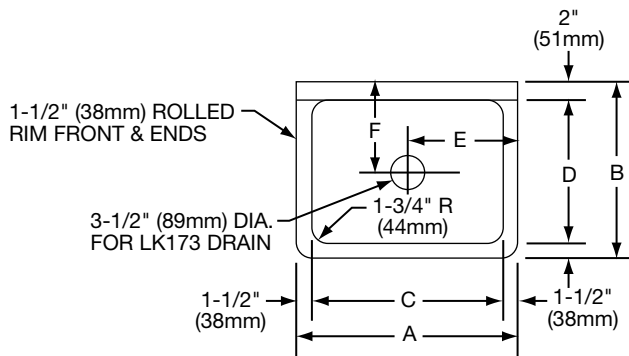


Model ESS2520C

Model ESSB2520C

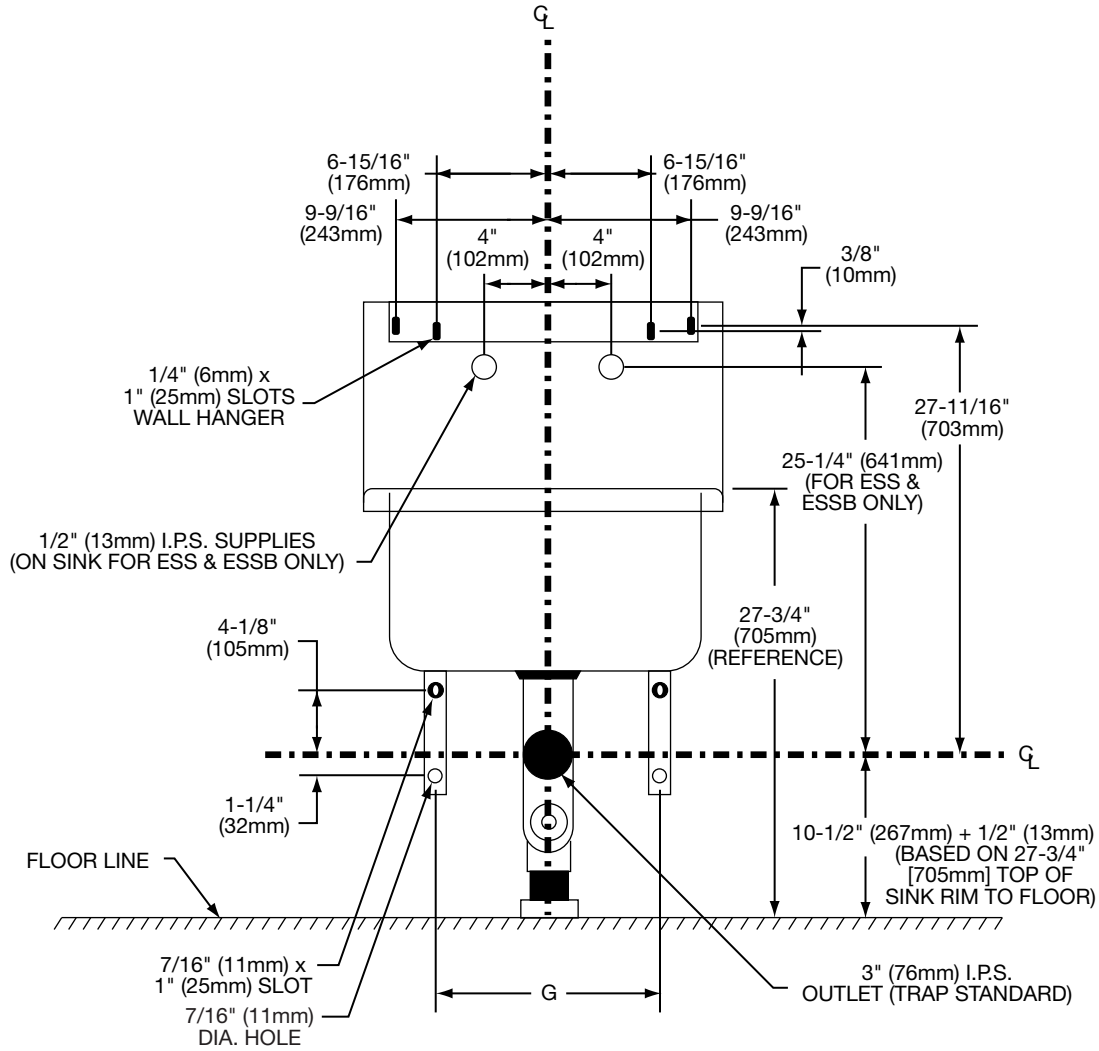


Model ESSW2520C



**Service Sink, Wall Mounted  
Model ESS, ESSB and ESSW Series**

**ELKAY®  
ROUGH-IN DIMENSIONS**



Model Number	G	
	in.	mm
*2118C	13	330
*2319C	14½	368
*2520C	17	432

\*Above "G" dimensions refer to ESS, ESSB and ESSW Series.