

36"

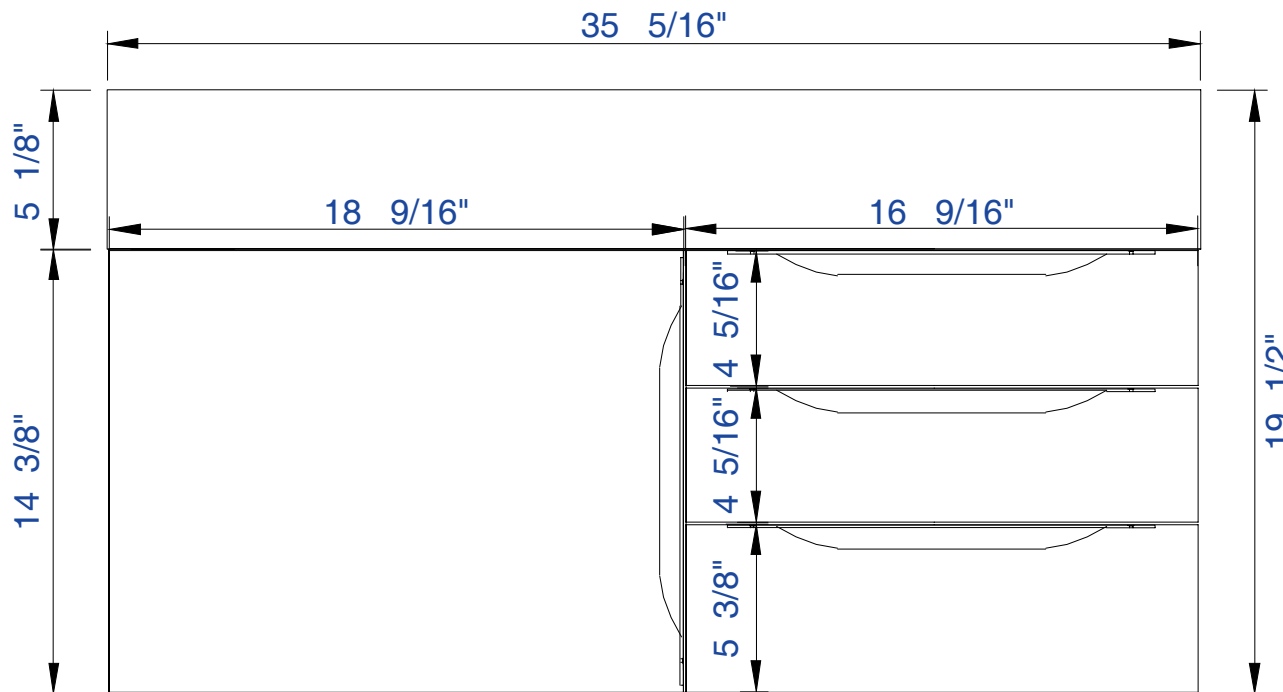
Item Number :

- 389-V36-AGR-A
- 389-V36-CFO-A
- 389-V36-GW-A
- 389-V36-LTO-A



Mercer Island 36" Cabinet

Diagrams with Dimensions
page 01 of 03



NOTE ONE: Married Countertop is standard for this cabinet.
NOTE TWO: This vanity does not have a Backsplash.

36"

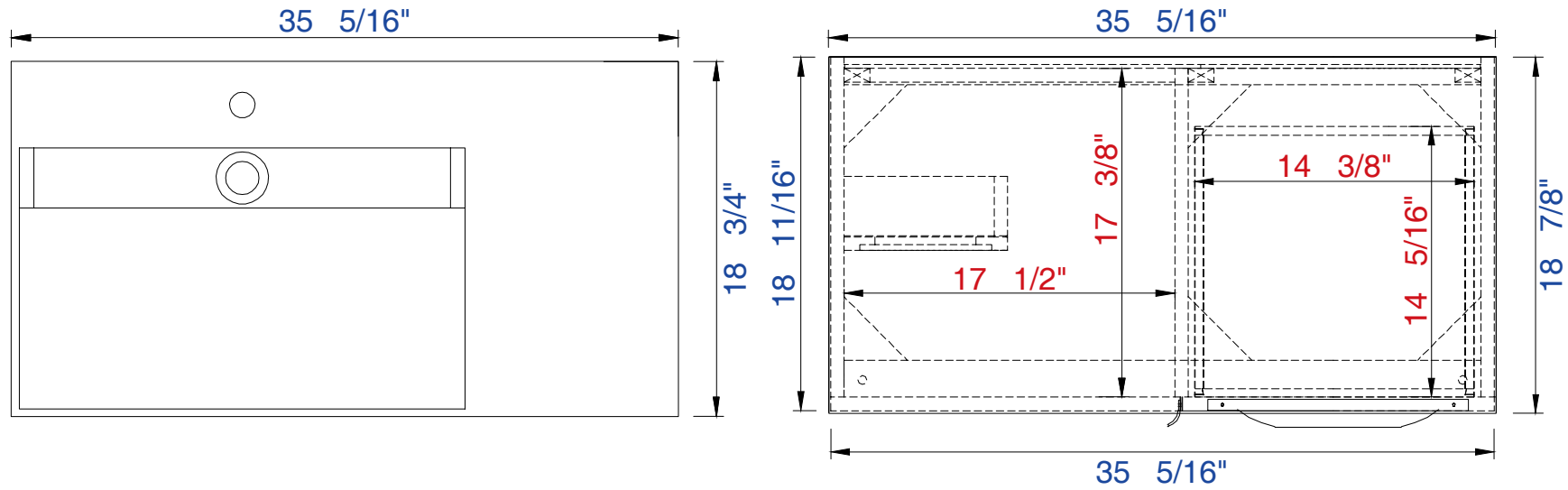
Item Number:

- 389-V36-AGR-A
- 389-V36-CFO-A
- 389-V36-GW-A
- 389-V36-LTO-A



Mercer Island 36" Cabinet

Diagrams with Dimensions
page 02 of 03



NOTE ONE: Married Countertop is standard for this cabinet.

36"

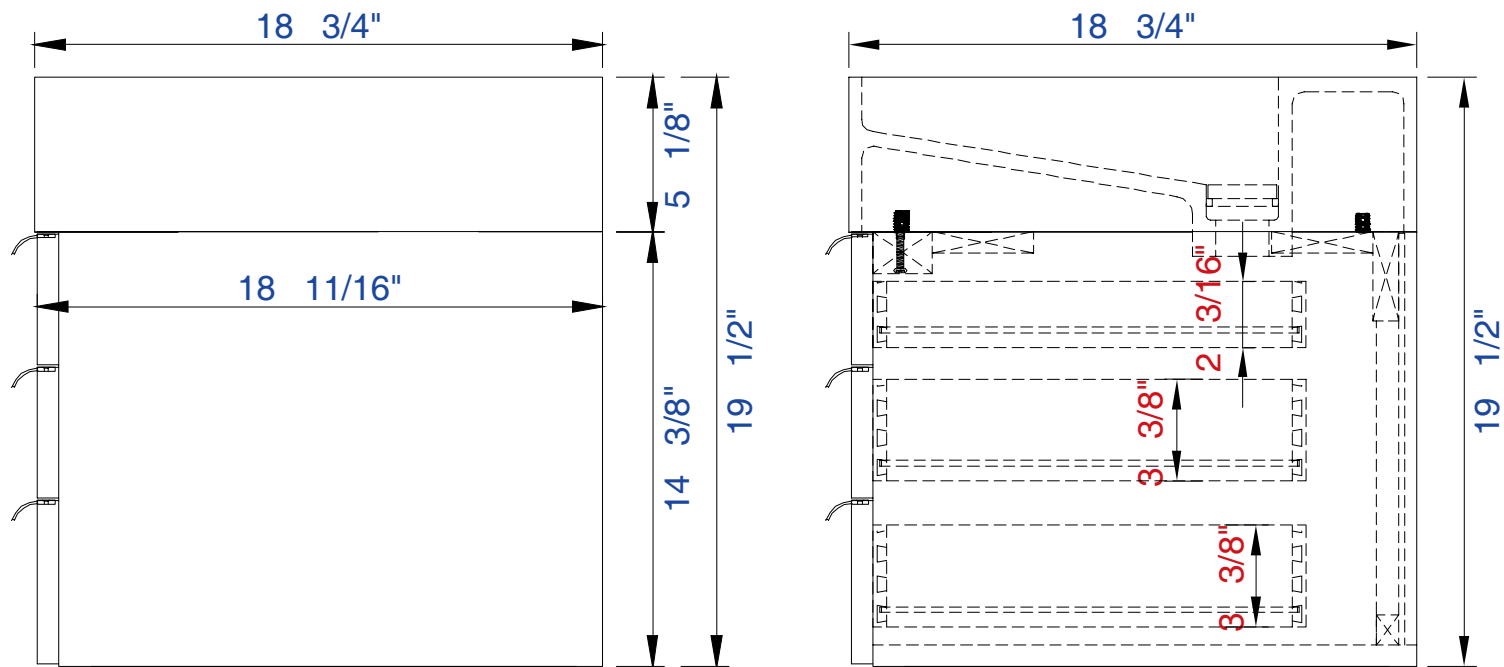
Item Number :

- 389-V36-AGR-A
- 389-V36-CFO-A
- 389-V36-GW-A
- 389-V36-LTO-A



Mercer Island 36" Cabinet

Diagrams with Dimensions
page 03 of 03



NOTE ONE: Married Countertop is standard for this cabinet.
NOTE TWO: This vanity does not have a Backsplash.

897mm

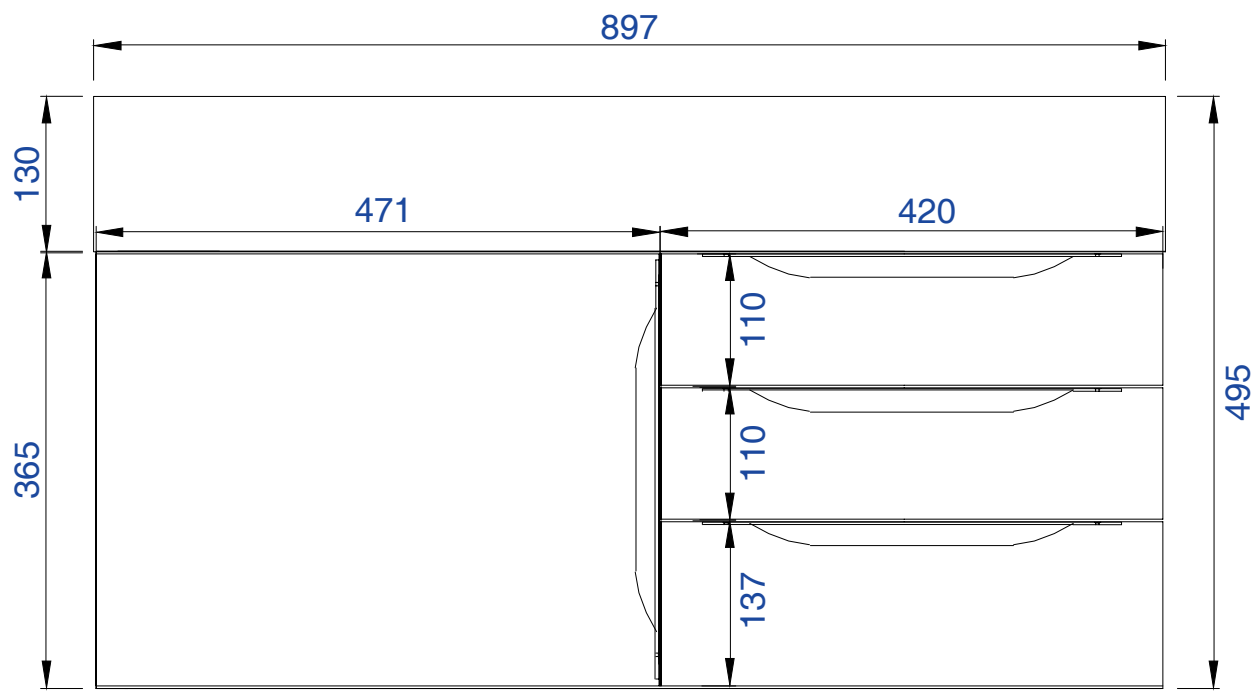
Item Number :

- 389-V36-AGR-A
- 389-V36-CFO-A
- 389-V36-GW-A
- 389-V36-LTO-A



Mercer Island 897mm Cabinet

Diagrams with Dimensions
page 01 of 03



NOTE ONE: Married Countertop is standard for this cabinet.
NOTE TWO: This vanity does not have a Backsplash.

897mm

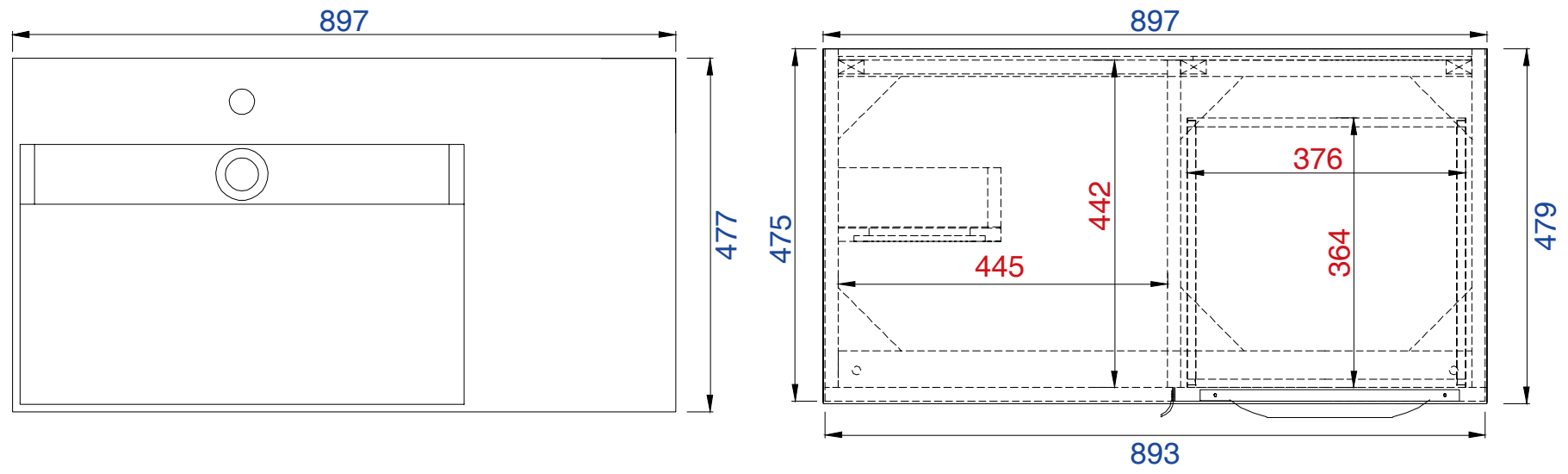
Item Number:

- 389-V36-AGR-A
- 389-V36-CFO-A
- 389-V36-GW-A
- 389-V36-LTO-A



Mercer Island 897mm Cabinet

Diagrams with Dimensions
page 02 of 03



NOTE ONE: Married Countertop is standard for this cabinet.

897mm

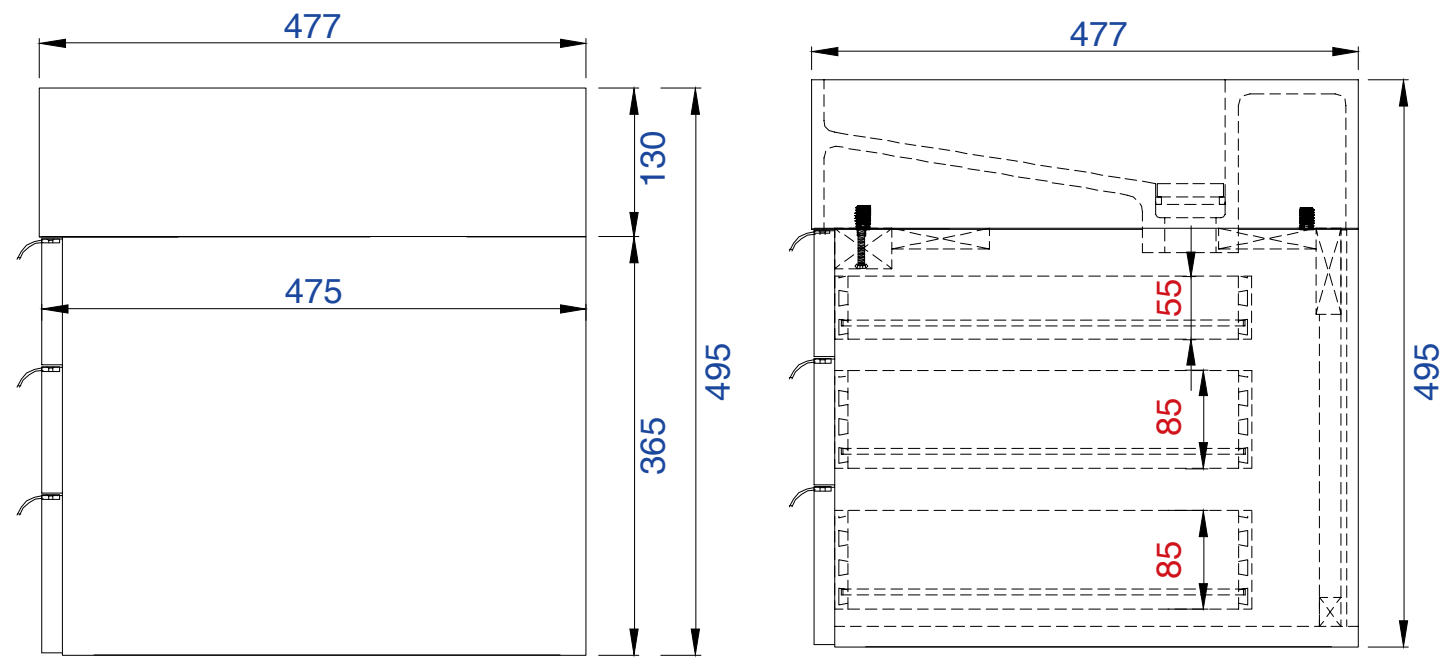
Item Number :

- 389-V36-AGR-A
- 389-V36-CFO-A
- 389-V36-GW-A
- 389-V36-LTO-A



Mercer Island 897mm Cabinet

Diagrams with Dimensions
page 03 of 03



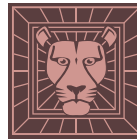
NOTE ONE: Married Countertop is standard for this cabinet.
NOTE TWO: This vanity does not have a Backsplash.

36"

Item Number:

- 389-V36-AGR-A
- 389-V36-CFO-A
- 389-V36-GW-A
- 389-V36-LTO-A

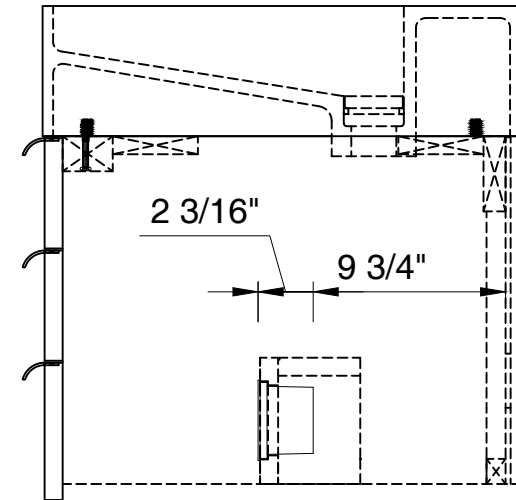
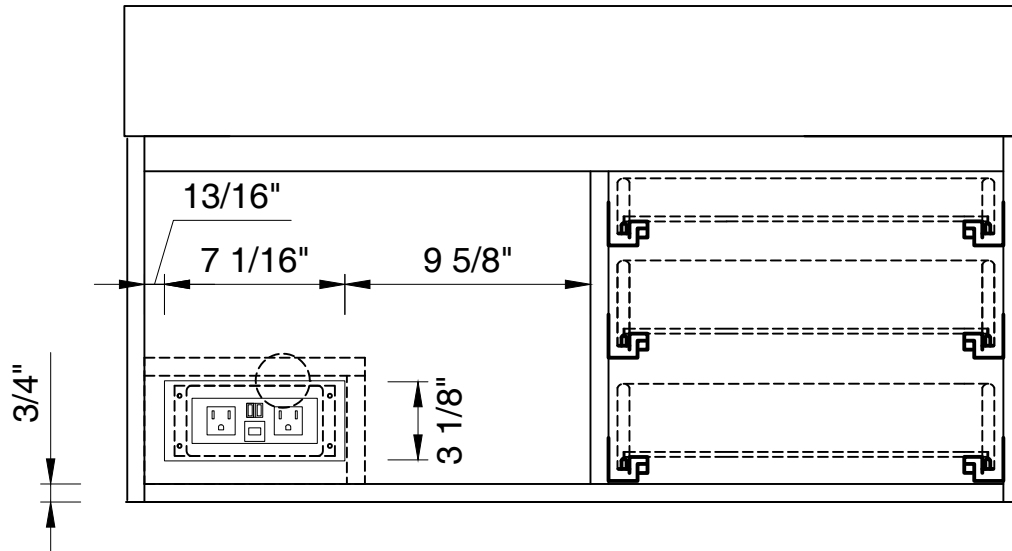
JAMES MARTIN



VANITIES™

Mercer Island 36" Cabinet

Diagrams with Dimensions
page 01 of 01



897mm

Item Number:

- 389-V36-AGR-A
- 389-V36-CFO-A
- 389-V36-GW-A
- 389-V36-LTO-A

JAMES MARTIN



VANITIES™

Mercer Island 897mm Cabinet

Diagrams with Dimensions
page 01 of 01

