

Installation Instructions



Tools You Will Need



Level



Tape
Measure



Pencil



Sealant
Tape



Silicone
Sealant



Safety
Goggles

AND:

- Drop Cloth
- Tub & Tile Caulk
- Caulking Gun
- Standard Woodworking Tools

INSTALLATION TIPS

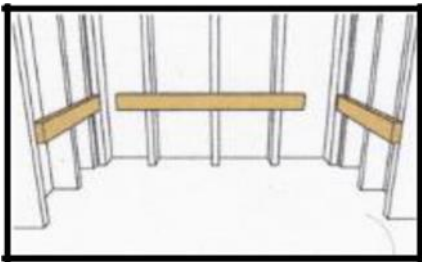
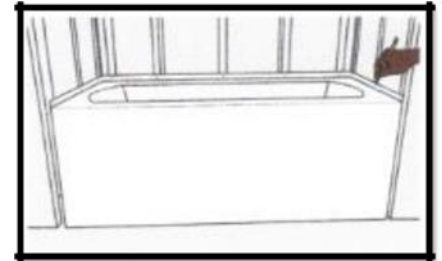
- The following are general instructions for installing an alcove bathtub.
- Observe all local plumbing and building codes.
- It is recommended that a licensed plumber install this product.
- Confirm the correct model was received, the installed drain location matches the model received, measure the dimensions of the actual tub.
- Measure all points of the rough-in alcove to ensure it accommodates the tub received, and that it is true, plumb, and square.
- Check that the subfloor is level. Ensure the subfloor can adequately support the load of the tub filled with water. Your tub is designed with adjustable feet to insure a level installation.

Skirted Alcove Bathtubs

Installation Instructions

Step 1 – Positioning and Leveling

Position the alcove bathtub into the opening where the tub will be installed. Level the deck in all directions using the adjustable feet on the bottom of the bathing well. Once it is in position, mark the tubs position, circling the feet positions, and the underside of the deck horizontally across the wall or studs. Use product specification sheet as a reference when planning your layout.

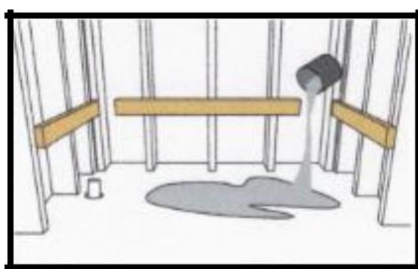
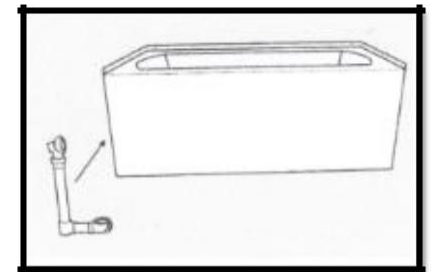


Step 2 – Installing Stringers

After step one is complete, and all markings are complete, remove the tub from the alcove. Install a wood board (“stringer”) with a minimum dimension of 1” x 4”. The top of the stringer should be in line with the previously marked horizontal line. This will help keep the bathtub stable, secure and level.

Step 3 – Installing the Overflow and Drain

Install the rough plumbing. Install the drain, utilizing the installation instructions provided with the drain. Make sure all connections are secure and tight. Water test for leaks before installing tub.



Step 4 – Preparing the Floor Drain

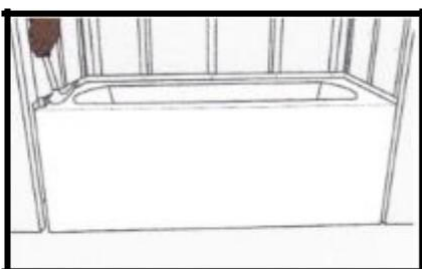
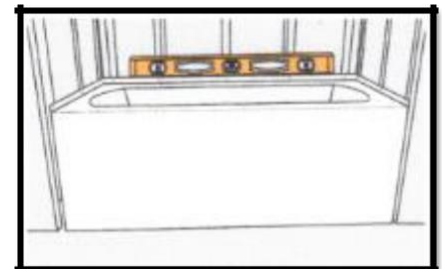
Make sure that the in-floor drain is properly prepared and ready to receive the bathtub.

Step 5 – Preparing the Floor with an Adhesive

The bathtub should be set in a bedding compound, thin set, or mortar mix in a sufficient amount to provide continuous support and even weight distribution. Apply a liberal amount of permanent construction adhesive to all support feet.

Step 6 – Setting and Final Leveling

While the bedding compound and construction adhesive are still wet, lift and place the tub into its final position. Level the tub in all directions before adhesives set. The tub should rest flush with the stringers. Do not allow the rim of the tub to support the weight of the tub. Connect the bath drain to drain pipe



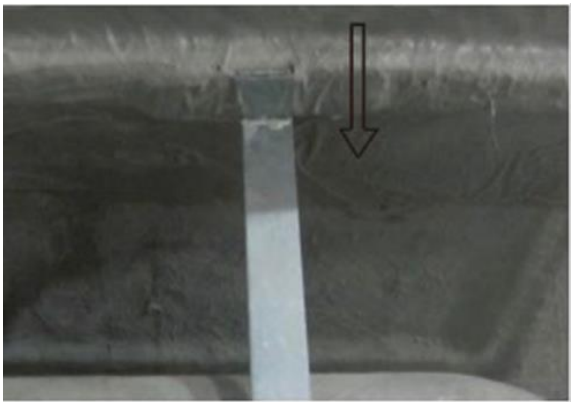
Step 7 – Securing Flange to the Studs

Once the tub is in its final position and confirmed level in all directions, secure the flange to the studs. Drill holes through the flange into the studs. Secure with a rustproof screw. Install furring strips to the studs so they are flush with the flange. Allow the bedding compound and construction adhesive to dry thoroughly before proceeding with installation of wallboard to within 1/16” of bath rim. Use 100% silicone sealant to around the bath, finished walls, deck, and seams.

Installation Instructions

Support Bar Installation

1. Install skirt/apron support brackets before installing bathtub in alcove.
2. Flip the skirted bathtub upside down. Be sure to set on a soft surface that will not scratch the finished surface of the tub.
3. Do not drill pilot holes, use self-tapping screws no longer than 20mm (0.75") otherwise you risk puncturing the bathtub. Screws are provided with the support brackets.
4. Lay out the support bars. Insert the short end of the support bar into the bracket on the unfinished side of the tub skirt. (Arrow is pointing to the top of the tub.)



5. Use a level or carpenter's square to make sure the finished side of the skirt is vertical to the ground.



Installation Instructions

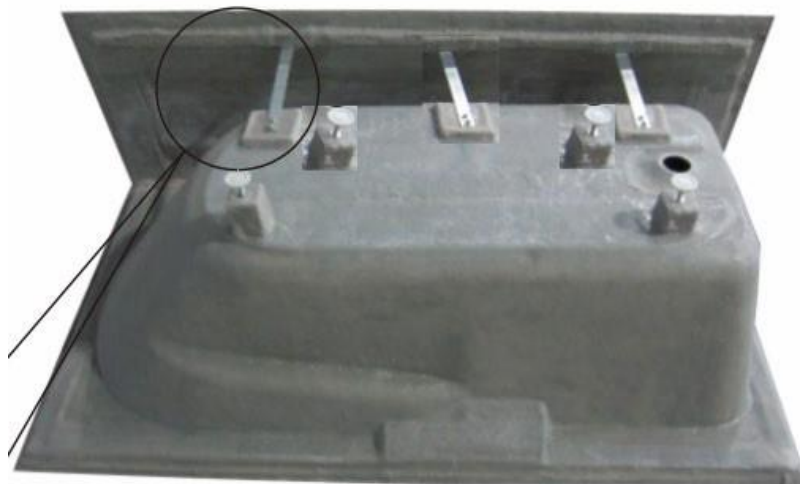
6. With the apron vertical to the ground, fix the support bracket with 2 stainless steel ST6x20 screws into the bracket support base (small rectangular raised area on the bottom of the tub).



7. Repeat steps 4-6 being sure that the skirt is vertical AND the apron is even/level across the horizontal/long side of the skirt. Repeat steps 4-6 one more time until a total of 3 support brackets are attached to the skirted bathtub.



8. Once all three support brackets are installed follow the Skirted Alcove Bathtub Installation Guide to complete the remainder of the installation.





Mainline products manufactured by Georgetown Building Solutions LLC and Interquatic® will be covered by Georgetown Building Solutions LLC and Interquatic®'s warranty as follows:

INTERQUATIC 10 YEAR LIMITED WARRANTY

For Georgetown Building Solutions LLC and Interquatic® acrylic apron front tubs

Georgetown Building Solutions, LLC ("GBS, LLC"), also sold under the brand name Interquatic®, warrants to the original consumer purchaser that it will, at its option, and only after inspection by an authorized representative of GBS, LLC, repair, replace, or make appropriate adjustments of the tub or any of its parts that are found by GBS, LLC, in its sole judgment, to be defective under normal residential use and maintenance, so long as it is owned by the original consumer purchaser.

This limited warranty does not cover commercial installations or installations outside the continental United States. Commercial installations include, but is not limited to, healthcare facilities, dormitories, apartment complexes, hotels, and hostels. The limited warranty at commercial installations is limited to 1 year.

The warranty is limited to its structural integrity and bathing well surface. The tub will maintain structural integrity and will not leak due to a manufacturing defect. The bathing well surface will not crack, blister, or delaminate due to a manufacturing defect.

This limited warranty DOES NOT COVER the following:

- Defects or damages arising due to shipping, installation, alterations, accidents, abuse, misuse, flood, fire, force of nature, use other than bathing purposes, lack of proper maintenance and cleaning and use of other than genuine GBS, LLC Interquatic® replacement parts, in all cases whether caused by a service company, plumbing contractor, the owner, or any other person.
- This warranty is void if it is improperly installed, the manufacturer installation procedures are not followed, or the unit is removed from its initial installation location.
- Deterioration through normal wear and tear and the expense of normal maintenance, excessive use, water conditions, sun fading, and improper cleaning are not covered.
- Any modifications, alterations, or customization made by a service representative not authorized by GBS LLC Interquatic® will void warranty.
- Options and accessories, including, aprons, drains, drain covers, overflow drain covers.
- Postage or shipping costs for returning products for repairs, replacement components or replacement unit under this limited warranty.
- Labor or other costs incurred in connection with product removal and/or installation under this limited warranty.
- ANY LIABILITY FOR CONSEQUENTIAL OR INCIDENTAL DAMAGES, ALL OF WHICH ARE HEREBY EXPRESSLY DISCLAIMED, OR THE EXTENSION BEYOND THE DURATION OF THIS LIMITED WARRANTY OF ANY IMPLIED WARRANTIES, INCLUDING THOSE OF MERCHANTABILITY OF FITNESS FOR AN INTENDED PURPOSE. IN NO EVENT SHALL THE LIABILITY OF GBS, LLC EXCEED





THE PURCHASE PRICE OF THE PRODUCT OR ACCESSORY (Some jurisdictions do not allow limitations on how long an implied warranty lasts, or the exclusion or limitation of incidental or consequential damages, so these limitations and exclusions may not apply to you.)

- Responsibility for compliance with local code requirements. (Since local code requirements vary greatly. Distributors, retailers, dealers, installation contractors, and users of plumbing products should determine whether there are any code restrictions on the installation or use of a specific product.)
- This warranty gives the original consumer purchaser specific legal rights. You may also have additional rights which vary from state to state, in which case this limited warranty does not affect such statutory rights.
- All written or implied warranties are limited to the durations expressed here within.

All units must be water tested before installation to validate warranty.

Accessories not factory installed are not covered under this warranty.

Covered Products:

Acrylic apron front bathtubs

Warranty Service:

In order to make a claim under this warranty, the original consumer purchaser must notify Georgetown Building Solutions, LLC in writing no later than fifteen (15) days from occurrence and must be within the expressed warranty period(s). Send a description of the product, model, and defect to the following address:

**Georgetown Building Solutions LLC
Warranty Service Department
15565 Wright Brothers Dr.
Addison, TX 75001
(214) 572-2000**

With the issuance of this warranty, Georgetown Building Solutions, LLC stipulates, and the purchasers agrees, that in the event litigation is instituted as a result of this limited warranty, said litigation will be controlled by the applicable laws of the State of Texas, and the buyer and seller both agree that the appropriate forum and venue for any such litigation will be in Dallas County, State of Texas.

