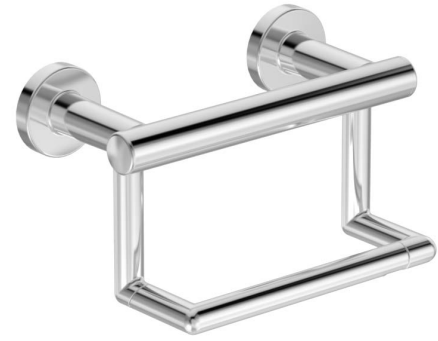




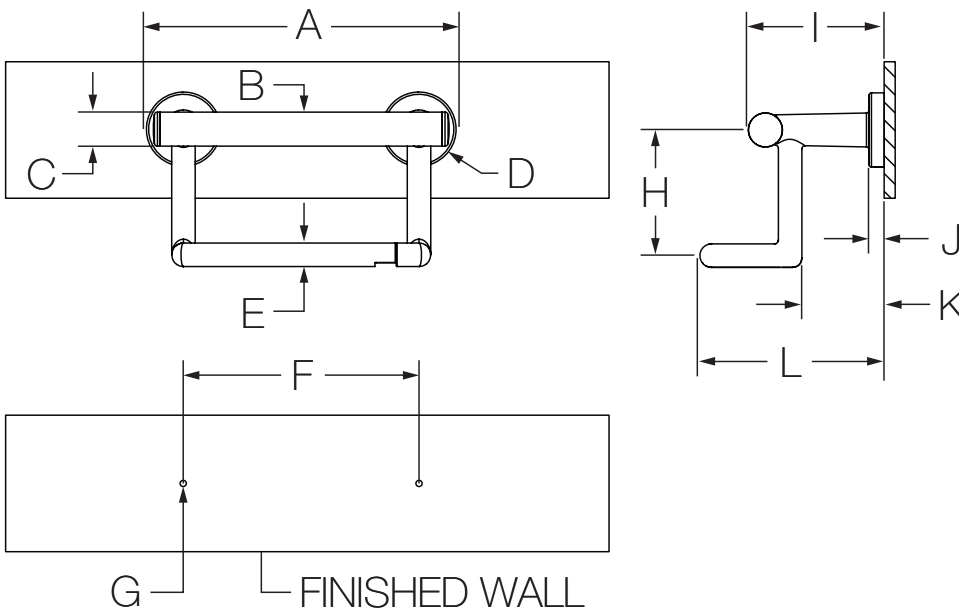
Location:



353GBTP
ADA Toilet Paper Holder with Assist Bar
Specification Submittal

<p>Model Numbers</p>	<p>Feature Highlights</p>
<p><input type="checkbox"/> 353GBTP <i>Toilet Paper Holder with Assist Bar</i></p>	<ul style="list-style-type: none"> • Supports up to 250 lbs. as an assist bar • 7/8" bar diameter • 1-7/8" flange diameter • Bar extends 2-1/8" from wall • Concealed mounting for a clean look • Pivoting tissue holder for easy loading • Mounting hardware and mounting plate included • Metal construction in standard polished chrome finish • Winglts compatible
<p>Finish Options</p>	<p>Warranty</p>
<p><input type="checkbox"/> -STN <i>Satin Nickel finish</i></p> <p>Note: Append appropriate -suffix to model number.</p>	<p>Limited Lifetime - to the original end purchaser in consumer/residential installations. 5 Years - for industrial/commercial installations. Refer to www.symmons.com/warranty for complete warranty information.</p>

Dimensions



Measurements	
A	7-7/8", 200 mm
B	Load bearing surface supports up to 250 lbs. as an assist bar
C	Ø 7/8", 22 mm
D	(2x) Ø 1-7/8", 48 mm
E	19/32", 15 mm
F	6", 152 mm
G	(2x) Hole Size Ø 7/64", 3 mm
H	3-3/16", 81 mm
I	3-3/8", 86 mm
J	3/8", 10 mm
K	2-1/8", 54 mm
L	4-11/16", 119 mm

Note: Dimensions subject to change without notice.