

California Faucets®

Descanso®

SQUEEZE LEVER CULINARY KITCHEN FAUCET

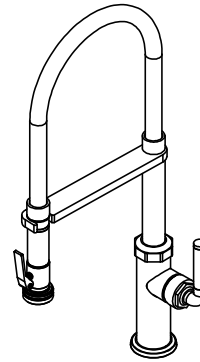
Features

- Over 28 finishes including 13 PVD finishes
- All brass construction
- 360° rotating arm with slide-in opening to secure sprayhead
- Flexible closed coil stainless steel spring
- Magnetic docking secures sprayhead into arm
- Squeeze lever switches between aerated and spray modes
- Spray jets have easy-to-clean surface that withstands mineral build-up
- Ceramic disc cartridge
- Max flow rate: 1.8 gpm (6.8 L/m)

Codes/Standards Applicable

Meets or exceeds the following at date of manufacture:

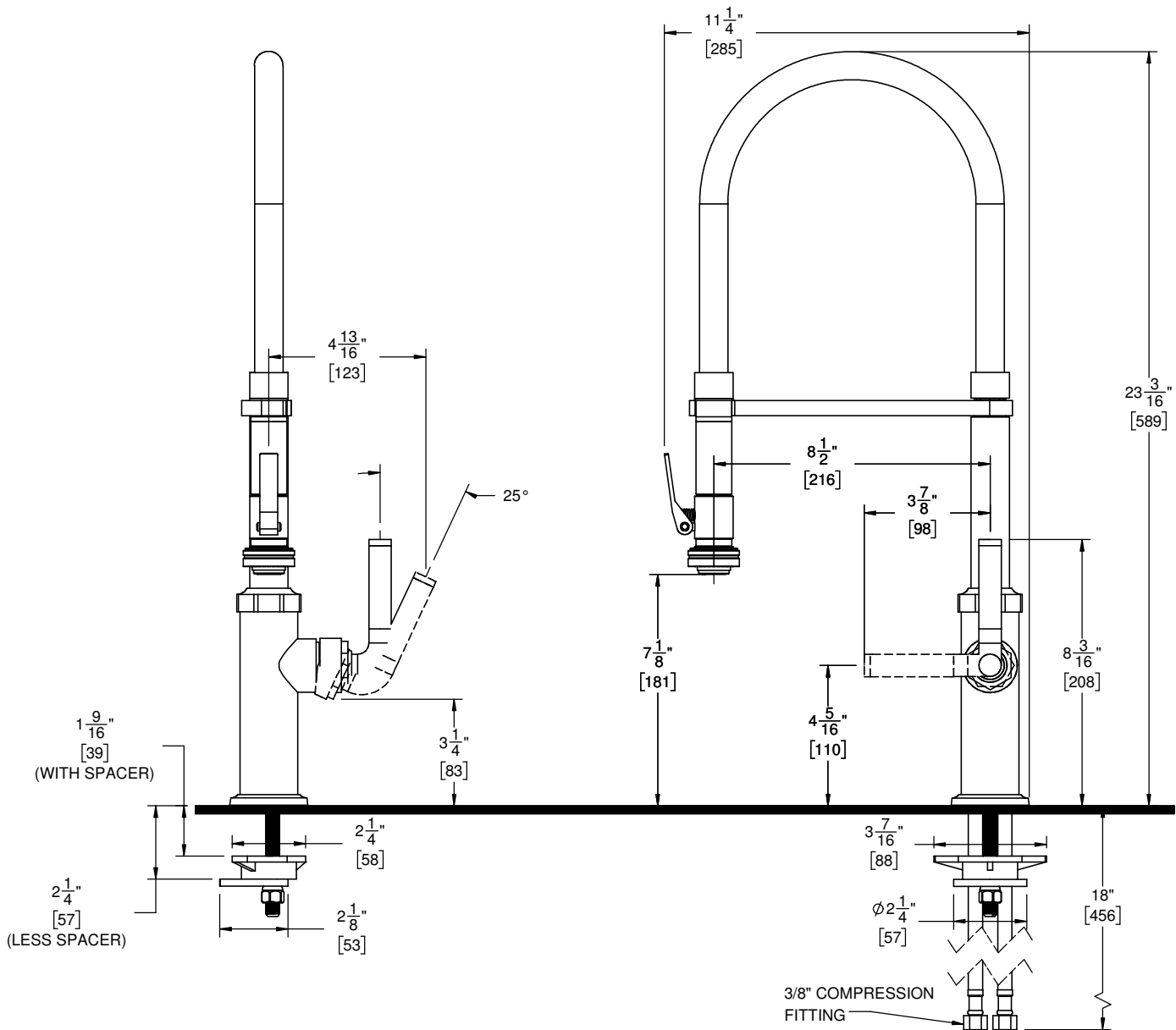
- ASME A112.18.1/CSA B125.1
- NSF 61 and NSF 372
- CEC / DOE
- Commonwealth of MA
- ADA Compliant



CF-K30-150SQ-XX
CF-K30-150FSQ-XX

CF-K30-150SQ-FL-ZZ SHOWN

XX = DENOTES
HANDLE STYLE



THROUGH-HOLE SPECIFICATIONS		
MIN	RECOMMENDED	MAX
ϕ 1-1/4"	ϕ 1-3/8"	ϕ 1-3/8"

SPECIFICATIONS SUBJECT TO CHANGE WITHOUT NOTICE

ALL DIMENSIONS SHOWN TO NEAREST 1/16"
[ALL DIMENSIONS SHOWN TO NEAREST 1MM]"