

California Faucets®

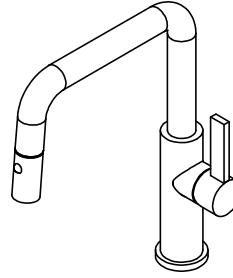
**Corsano®**

**PULL DOWN KITCHEN FAUCET - 2 BEND SPOUT**

**Features**

- Over 28 finishes including 13 PVD finishes
- All brass construction
- 360° rotating spout
- Magnetic docking secures sprayhead into spout
- One button brass spray head has dual function aerated or spray mode
- Spray jets have easy-to-clean surface that withstands mineral build-up
- Quiet polymer-braided hose with rotating joint at sprayhead allows for smooth and non-binding use
- Ceramic disc cartridge
- Max flow rate: 1.8 gpm (6.8 L/m)

**CF-K51-103-XX**



**Codes/Standards Applicable**

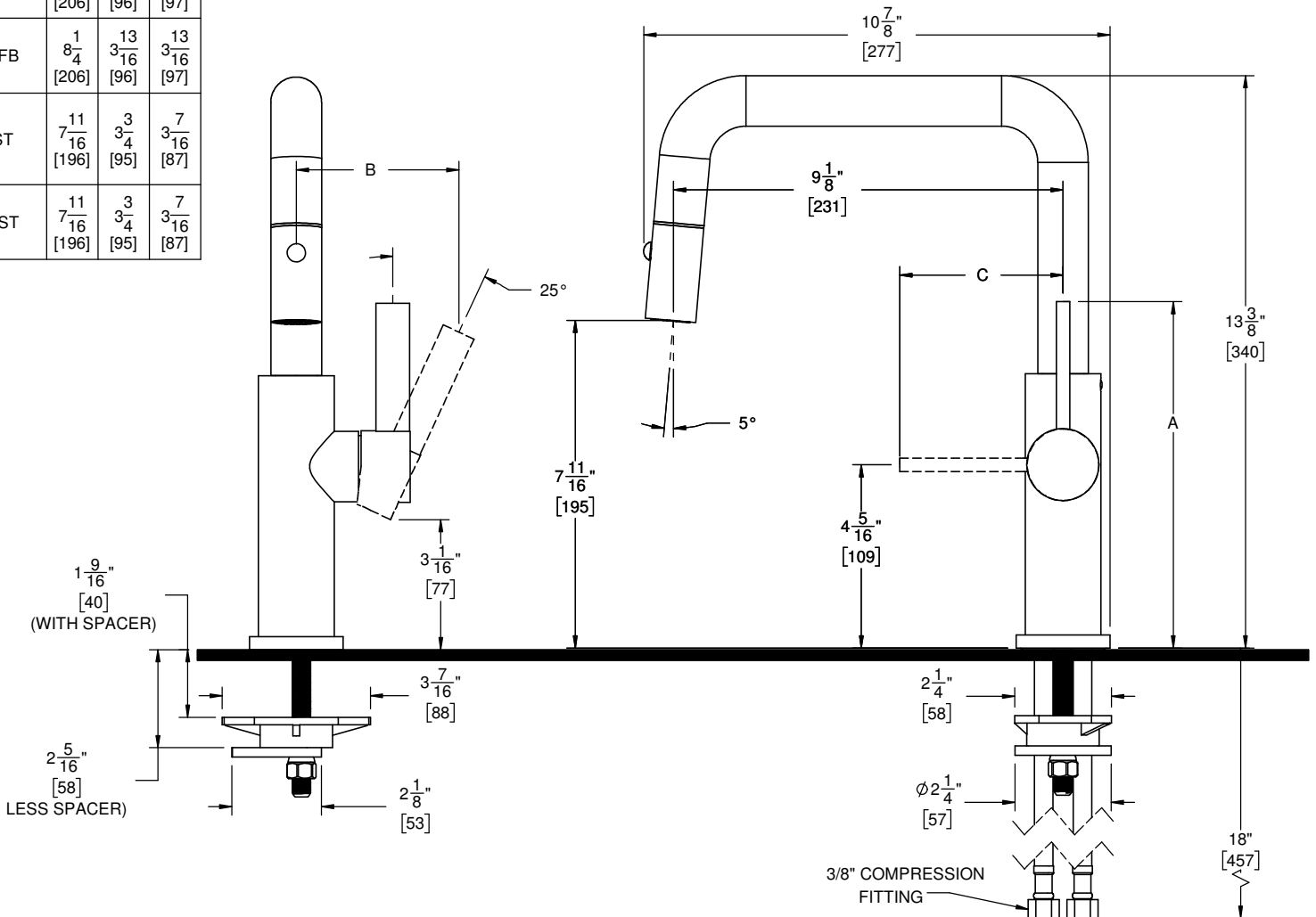
Meets or exceeds the following at date of manufacture:

- ASME A112.18.1/CSA B125.1
- NSF 61 and NSF 372
- CEC / DOE
- Commonwealth of MA
- ADA Compliant

CF-K51-103-FB-ZZ SHOWN

XX = DENOTES HANDLE STYLE

DIMENSIONS (in.)[mm]			
XX HANDLE	A	B	C
FB	8 <sup>1</sup> / <sub>4</sub> " [206]	3 <sup>13</sup> / <sub>16</sub> " [96]	3 <sup>13</sup> / <sub>16</sub> " [97]
BFB	8 <sup>1</sup> / <sub>4</sub> " [206]	3 <sup>13</sup> / <sub>16</sub> " [96]	3 <sup>13</sup> / <sub>16</sub> " [97]
ST	7 <sup>11</sup> / <sub>16</sub> " [196]	3 <sup>3</sup> / <sub>4</sub> " [95]	3 <sup>7</sup> / <sub>16</sub> " [87]
BST	7 <sup>11</sup> / <sub>16</sub> " [196]	3 <sup>3</sup> / <sub>4</sub> " [95]	3 <sup>7</sup> / <sub>16</sub> " [87]



THROUGH-HOLE SPECIFICATIONS		
MIN	RECOMMENDED	MAX
∅ 1-1/4"	∅ 1-3/8"	∅ 1-3/8"

SPECIFICATIONS SUBJECT TO CHANGE WITHOUT NOTICE

ALL DIMENSIONS SHOWN TO NEAREST 1/16"  
[ALL DIMENSIONS SHOWN TO NEAREST 1MM]"